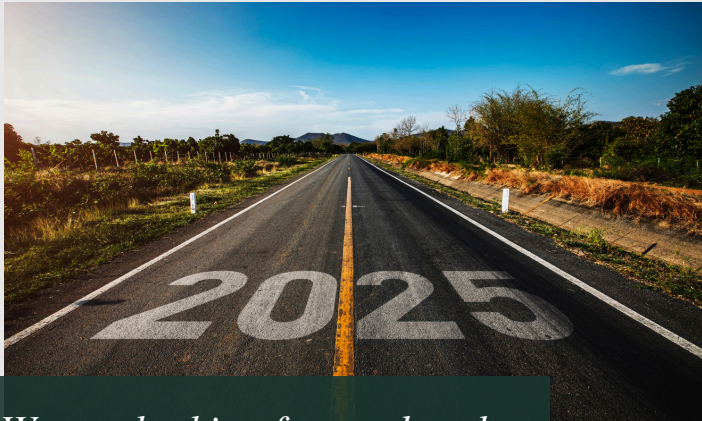




NEWSLETTER



We are looking forward to the next stage in our school's journey.

HAPPY NEW YEAR!

Happy New Year to all our children, parents, and carers! As we step into 2025, we're filled with excitement and optimism for the year ahead. We have so many wonderful plans and opportunities in store for the children, and we can't wait to see them thrive and achieve great things.

Here's to a fantastic year of learning, growth, and making memories together! 🎉🌟

EXPLORING THE WORLD THROUGH GEOGRAPHY

This Spring term, geography takes the spotlight as our driving foundation subject across the school. Children will be expanding their geography knowledge through exciting and engaging enquiries.

In EYFS, the focus is on exploring their local area, while KS1 will be comparing islands. LKS2 will dive into learning about land use and settlements, and UKS2 will be exploring the rainforest and global trade.

We can't wait to see the children's curiosity and understanding grow as they become confident young geographers!



EXCELLENT ATTENDANCE IS IMPORTANT

Our current school attendance stands at **95.97%**, which is below our school target of 97%.

We welcome the Spring term and hope that winter illnesses are now behind us, allowing children's attendance to be less affected. With this in mind, we look forward to working together to achieve our attendance target of 97%.

Please reach out if you need any support with your child's attendance - we are always here and happy to help.

97%

*School keeps children safe,
educates them, and prepares
them for their future.
Don't let them miss out!*

FREE SCHOOL MEALS

Your child might be eligible if you access:

- Income Support
- Income-based Jobseeker's Allowance or Employment and Support Allowance
- Support under part VI of the Immigration and Asylum Act 1999
- The guaranteed element of Pension Credit
- Child Tax Credit (provided you're not also entitled to Working Tax Credit and have an annual gross income of no more than £16,190)
- Working Tax Credit run-on
- Universal Credit, provided you have an annual net earned income not exceeding £7,400 (£616.67 per month)



*Check your eligibility now and
[APPLY HERE](#)*

Derbyshire County Council use the Department for Education's free school meals eligibility checking system, meaning you will receive an instant result notification and the school will be informed.

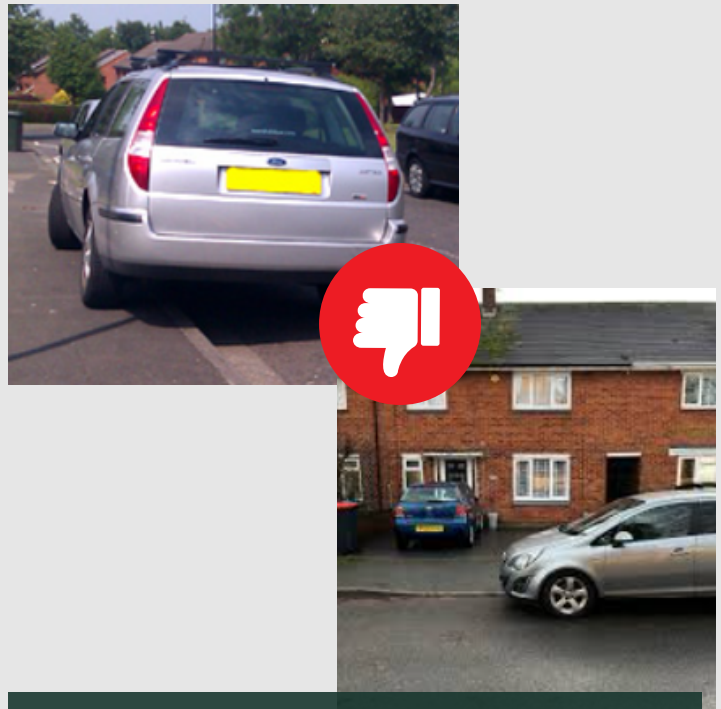
PARKING - WE MUST DO BETTER!

We need to urgently address the ongoing issue of parking during school drop-off and pick-up times. Unfortunately, inconsiderate parking from some parents and carers is straining our positive relationships with local residents and neighbours, who have been long-standing supporters of our school.

Imagine returning home from a long night shift only to find your driveway blocked by someone else's car - it's incredibly frustrating and unfair.

We understand that mornings can be hectic and stressful, but we urge everyone to consider how their actions impact others. Please, do not put the safety of others or inconvenience our neighbours for the sake of a few extra moments.

We must do better - for the safety of our children and relationships with the school community around us.

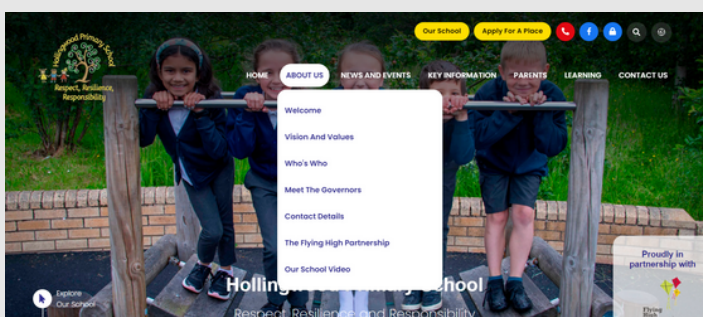
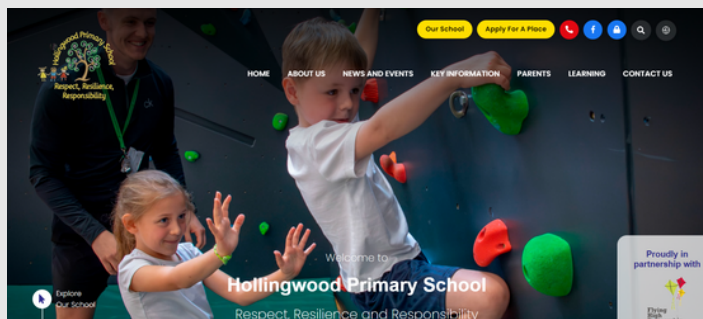


We strongly recommend those driving to school to park in the Hollingwood Pub car park. This entrance is staffed.

OUR NEW WEBSITE IS LIVE

We're excited to announce the launch of our new and improved school website! Designed to be more user-friendly, it's a one-stop platform where parents and carers can easily find the information they need.

We're still in the process of making tweaks and updating content, so if you come across any errors or have suggestions, please don't hesitate to call the school office.



EXTENDED WRAPAROUND CARE 7:30AM - 6PM



We have extended our Breakfast Club, which now opens from 7:30am for an additional £1 per session. Starting from Monday 27th January, we're also extending our After-School Club provision to 6:00pm, for an additional £1.50.

We hope these changes will help families better balance work and other commitments while ensuring children have a safe and supportive environment. If you have any questions or would like to book, please contact the school office.

MIDDAY SUPERVISORS WANTED!

Are you looking for a part-time role that fits perfectly around your other commitments? Do you enjoy spending time with children and making a positive impact on their day?

We are currently seeking Midday Supervisors to support our children during their lunchtime break. This is a fantastic opportunity to join our school community in a role that's both rewarding and flexible.

Whether you're a parent, carer, grandparent, or know someone who might be interested, we would love to hear from you.

If you or a family member are interested in this role, please get in touch with the school office. We'd be delighted to provide more information and answer any questions you might have.



MAKING OUR MARK AND LEAVING A LEGACY

We're thrilled to announce the reintroduction of our school badges and we'd like to extend a huge thank you to the PTA for helping to fund them.

One badge we're particularly excited about is the 'Leaving a Legacy' badge, which aligns with our Curriculum Principles. This prestigious badge will be awarded to children who go above and beyond to make a positive impact on the lives of others or the environment within the community.

Examples of this might include volunteering in the community, fundraising for a charity, or litter picking in the local area.

If you feel your child is deserving of this badge because of the positive impact they have had, we'd love to hear from you! Please email a brief description along with any supporting evidence (e.g., photos or videos) to enquiries@hollingwood.derbyshire.sch.uk.

Let's celebrate the incredible contributions our children make to the world around them! 🌟



A VISIT FROM OUR LOCAL POLICE

This term, local PCSOs and Police Officers visited our school to deliver informative assemblies about their roles and how they help to keep us safe.

We want to thank them for their time and for sharing such valuable insights with our children.



Mr Stewart couldn't resist getting in on the action!

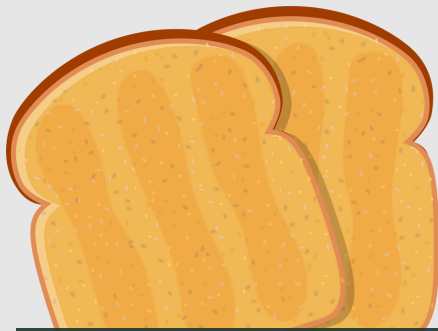
WELCOME MRS NASH

We are delighted to formally welcome Mrs. Nash to our admin team! She has successfully secured a role within the school office and is now our front of house, serving as your first point of contact when visiting the school. Well done, Mrs. Nash - we're so pleased to have you on the staff team.



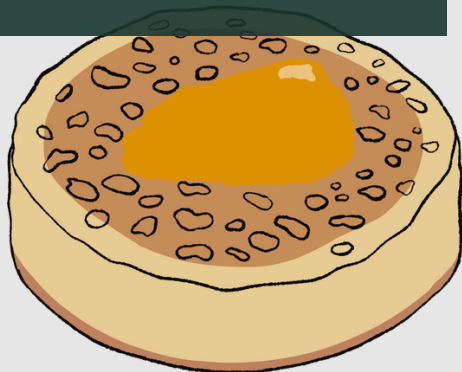
SCHOOL COUNCIL - WARM SNACK PROPOSAL

Our School Councillors have been busy liaising with their peers about ways to improve playtimes and snack times. After gathering feedback and evaluating their findings, they have proposed introducing the sale of warm snacks during AM break. Initially, they've suggested offering slices of toast and crumpets with butter.



COMING SOON

Toast and crumpets at playtime!



We will trial this initiative daily from **3rd to 7th February**, and the children will measure its success. If it proves popular, we hope to make it a permanent feature after half-term.

Key information:

- KS2 ONLY (KS1 if trial successful)
- 20p 1 x slice of toast
- 30p 1 x crumpet
- Cash only (not paid for on Parent Pay)
- No money = no snack
- Children responsible for their money
- First-come, first-served basis

Whilst in this trial phase, we apologise for any disappointments that may arise. This is a child-led initiative, and we thank you in advance for supporting their efforts and ideas.

SINGING FOR A CAUSE

Over the weekend, three of our Year 6 boys made a heartwarming gesture that has left us all inspired. What began as a spontaneous sing-song turned into an incredible act of kindness, as they performed for members of the public to raise money for Ashgate Hospice.

With great enthusiasm and cool dance moves, they managed to raise an amazing £100 for a charity that had supported one of their family members. 🎵🌟



Ralph, Harris and Kaiden received a 'Leaving a Legacy' badge.

READ. WRITE. INC PARENT WORKSHOPS



We are passionate about ensuring every child becomes a confident and enthusiastic reader. To support early reading, we use the Read Write Inc phonics scheme, which provides children with a strong foundation in reading and writing.

We understand that phonics may be unfamiliar to some parents, which is why we offer workshops every Tuesday from 3:15 to 3:30pm (after pick-up) for Reception and KS1 parents.

These sessions are designed to help you understand phonics and learn how to support your child's reading journey at home.

We strongly encourage you and your children to attend - working together, we can foster a love for reading that will last a lifetime! 🌟🌟

EXTRA-CURRICULAR CLUBS

At Hollingwood, we are proud to offer a wide range of extra-curricular clubs throughout the year, many of which are chosen by the children themselves. To provide exciting opportunities, we buy into external providers, ensuring our children can access experiences that might otherwise be more expensive outside of school.

Unfortunately, numbers for some clubs have been low. We encourage families to consider not only the new skills these activities can bring but also the social benefits they offer to children.

This term, we are thrilled to offer archery lessons for just £1.50 per session, running from 3:15 to 3:55 pm. Don't miss out on this fantastic opportunity for your child to try something new! Please contact our school office to book your child on.



£1.50 for a 40min activity is fantastic value for money!

STUDENTS & STAFFING

At Hollingwood, we are proud to work closely with local universities and training providers to offer high-quality placements for trainee teachers.

This term, we are delighted to welcome Mr Daniel into Nursery, Miss Smith into Mulberry Class, and Miss Ford into Oak Class.

We would also like to take this opportunity to inform you that Mrs Flexney is currently away from school on long-term sickness absence. We send her our very best wishes and look forward to welcoming her back in the future.



Mr. Daniel



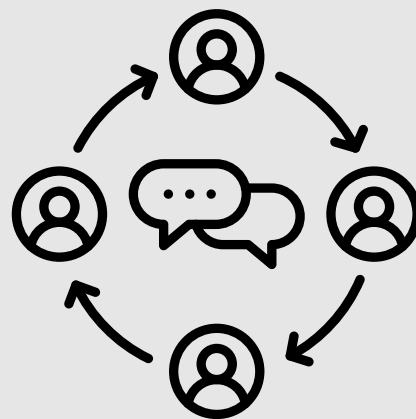
Miss Smith



Miss Ford

COMMS FEEDBACK - THANK YOU

Thank you to all parents and carers who shared their feedback. We're pleased that most of you are happy with our communications and we will use your suggestions to improve further. Your support is greatly appreciated!



“ YOU SAID ”

The information on Class Dojo isn't always relevant to me.

It can be tricky to keep on top of school events and find information about upcoming events. Information about events can feel 'last minute'.

Nearly 100% of parents / carers surveyed thought an office bulletin would be useful.

Class Dojo can be a little confusing to use.

WE DID!

Class specific information will **ONLY** be posted on class story pages. Whole-school information will be posted on the school story page.

We will use the class story calendar for class specific events and the school calendar for whole-school events. We aim to communicate events at least 4 weeks in advance, where possible.

A weekly office bulletin will be posted onto the whole-school story, starting after the February half-term.

We will post an informative video explaining some of the improvements we are making and how to use some of the useful features on Class Dojo.

SCHOOL OFFICE CLOSED AT LUNCHTIME

Please note that, as of Monday 27th January, our school office will be closed between 12-1pm, as our office staff (Miss Jenkinson and Mrs Nash) also work as Midday Supervisors. During this time, phonedlines will be unavailable, but you are welcome to leave a message, and we will get back to you as soon as possible.

If, in the event of an emergency, you need to come into school or get an urgent message to us, you can call the emergency mobile number - 07873585502.



WE'RE COLLECTING CHOCOLATE TUBS

Our lovely Mrs Morrell is collecting empty chocolate tubs on behalf of Macmillan Cancer Support. This fantastic initiative not only helps with recycling but also raises money for charity. If you have any spare tubs, please bring them into school before February half-term.

Thank you for your support!



MEDICATION - POLITE REMINDER

We kindly remind all parents and carers that any medication, including creams, must be brought to the school office by an adult. This ensures that we have the necessary paperwork completed and that all medicines are stored safely in line with our policies.

Please do not send any medication into school with your child, as this poses a safeguarding risk.



RECOMMENDED READS

Each month we will be recommending a reading book for EYFS, KS1, LKS2 and UKS2 as well as celebrating the favourite book of a member of staff. Here are January's recommended reads...



EYFS:

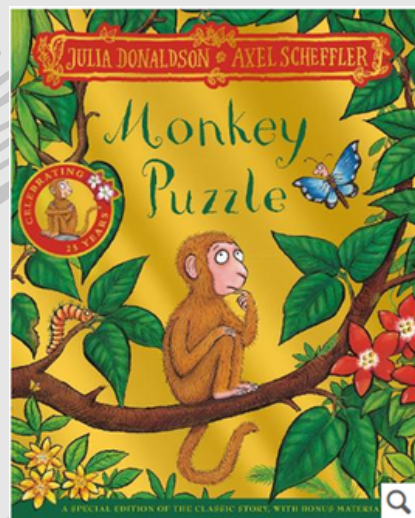
Knock Knock Dinosaur is by local author Caryl Hart.

It's fun to find a T-Rex on the doorstep, but when all 54 of his friends arrive, it's time to panic!

With awesome illustrations by the hugely talented Nick East, this playful dinosaur counting book is packed full of chaos and silliness!

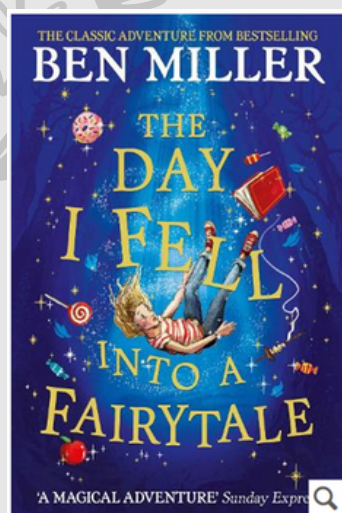
KS1:

Published this month is the 25th anniversary edition of Monkey Puzzle. How is this story 25 years old already? Monkey Puzzle is a delightful children's book written by Julia Donaldson and illustrated by Axel Scheffler. Together, they bring the charming tale of a little monkey's search for its mother to life with vibrant illustrations and engaging storytelling.



LKS2:

The Day I fell into a Fairytale by Ben Miller makes for a lovely bedtime read. Hidden in the strange new supermarket in town, Lana discovers a portal to a fairytale world! But these aren't the happy-ever-after fairytales that Lana knows, they are darker and more dangerous, and the characters need Lana's help to defeat an evil witch. But she can't do it alone.





UKS2:

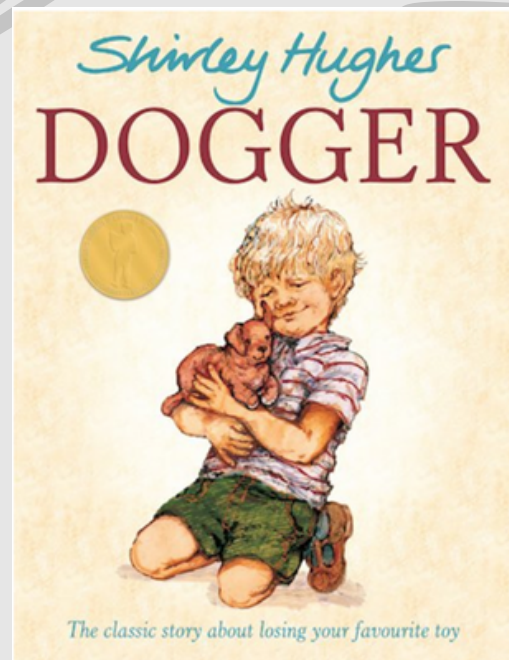
UKS2 were lucky enough to have a virtual author visit with Ross Montgomery during the Autumn Term.

I am Rebel is his latest release which tells the heart-warming story of the unbreakable bond between a dog and his human.

Rebel is a good dog, and he loves his simple, perfect life on the farm with his owner Tom – until one day the war comes too close... Now Tom is determined to join the rebellion to defeat the king's men. But Rebel knows war is dangerous, and he will stop at nothing to save the human he loves. Rebel must bring Tom home before it's too late.

MR STEWART loves... DOGGER

My reason for choosing Dogger as my favourite book is that the moral of the story is how important it is to think about other people and their needs. Bella does this perfectly and her actions make an incredible difference to her brother.



OPPORTUNITIES FOR ALL



Lea Green Learning and Development Centre

22h · 🌐

📣 SEN Soft Play Sessions 📣

BOOK NOW and PAY LATER, by clicking on the link. ⬇️

ADDITIONAL DATE - NEXT SUNDAY

🌟 Sunday 19th January (9:30 - 11:30)

January:

- 🌟 Wednesday 8th January (10 - 12 & 1 - 3)
- 🌟 Wednesday 22nd January (10 - 12 & 1 - 3)
- 🌟 Monday 27th January (10 - 12 & 1 - 3)

February half term:

- 🌟 Monday 17th February (10 - 12 & 1 - 3)
- 🌟 Tuesday 18th February (10 - 12 & 1 - 3)
- 🌟 Wednesday 19th February (10 - 12 & 1 - 3)
- 🌟 Thursday 20th February (10 - 12 & 1 - 3)
- 🌟 Friday 21st February (10 - 12 & 1 - 3)

Price:

£7 per child - includes hot drinks for all parents / carers

📞 01629 534561

✉️ leagreen.admin@derbyshire.gov.uk

NEUROHUB
NEURODIVERGENCE THRIVES HERE

PARENT AND CARER SUPPORT GROUP

Fairplay

A support group for parents and carers for children with additional needs

Join us 10am-12pm once a month
(14th January, 11th February, 11th March, 15th April, 13th May, 10th June, 15th July, 12th August, 9th September, 14th October, 11th November & 9th December)

- Advice
- Peer Support
- Guidance
- Signposting
- Coffee
- Cake

FAIRPLAY CENTRE, ALEXANDRA ROAD WEST, CHESTERFIELD, S40 1NP
Please park in the pay & display car park in Mecca Bingo

NEUROHUB
NEURODIVERGENCE THRIVES HERE

LET'S TALK... BEHAVIOUR WORKSHOP

29th January & 5th February 2025
9.30am-12pm

2-part workshop for parents/carers of neurodivergent children/young people who want to explore possible causes of and strategies for reactive and distressed behaviours.

Please scan the QR Code to book your place!

Fairplay,
Alexandra Road West,
Chesterfield,
S40 1NP

Please park in the pay & display car park in Mecca Bingo

DERBYSHIRE
County Council

Early Years SEN Support

"The benefits of early identification (of SEN) are widely recognised – identifying need at the earliest point; and then making effective provision, improves long-term outcomes for children" (*Special Educational Needs Code of Practice 2014*)

Derbyshire Local Offer
You can easily access **Early Years SEND** support information by clicking on the advice topics tab at the top of the home page of the **Derbyshire Local Offer** and selecting "Early Years" or using the link below to access the Early Years SEN Service section.
[Early years special educational needs \(SEN\) - Derbyshire Local Offer](#)

Early Years SEN Helpline
Universal, targeted and specialist support is available via the **EYSEN Helpline** from The Early Years SEN (EYSEN) and The Early Years Improvement (EYI) Services. The helpline is confidential and we do not take names of children, but can give advice around individual needs.

EYSEN Helpline support is available for anyone involved in supporting a child/children including parents, Early Years practitioners, Health Visitors, Paediatricians, Teachers, Early Help Practitioners and Speech and Language Therapists.
Contact EarlyYears.SENHelpline@derbyshire.gov.uk providing details of your query.

Training
In addition to support and advice, The EYSEN and Early Years Improvement Services offer a wide range of training on the Eventbrite online platform.

Early Years SEN Training:
<https://www.eventbrite.co.uk/o/derbyshire-eyesen-service-34416713297>

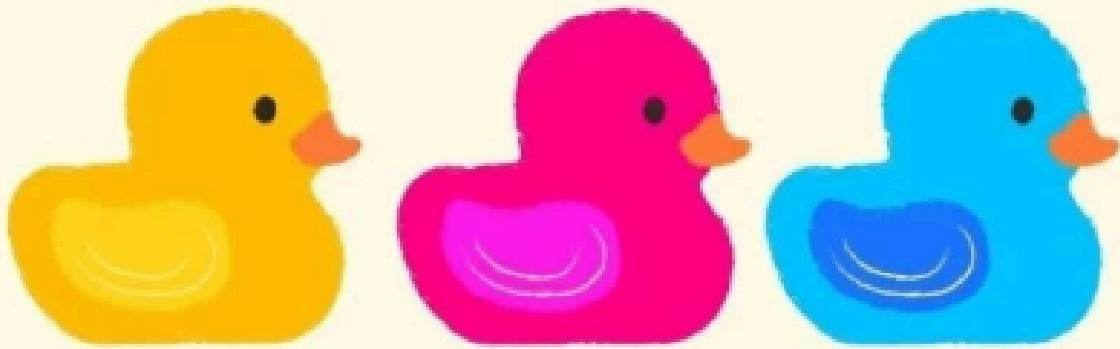
Early Years Service Training:
<https://www.eventbrite.co.uk/o/derbyshire-early-years-service-32778455207>

Please note that whilst some of the Early Years SEN training is bookable for parents and carers, most of the training is designed to be accessed by Early Years providers. See Eventbrite pages for more information.

Enabling potential & celebrating success:
Together we help children learn

PTA FUNDRAISER

VIRTUAL DUCK RACE



NAME YOUR DUCK AND WATCH IT RACE

£2 A DUCK

VIEW THE RACE ON THE PTA FACEBOOK PAGE
7PM - 31ST JANUARY 2025

WIN £50

How To Enter:

Bank Transfer Only To:

Hollingwood Primary School PTA

Sort Code: 30-99-50

Account Number: 23025963

Please Write Your

Ducks Name As

The Reference

Last Entry Midnight 29.01.25

Terms & Conditions

This competition is for Hollingwood Primary School Students, Family and Friends

Any Ducks with duplicate names will be numbered eg. Ducky, Ducky1, Ducky 2

Please enter 1 Duck Per Transaction eg. £2 sent via bank transfer at a time

Entries without a reference will not be entered but will still be charged

Any Payments made after 29.01.2025 will not be entered but will still be charged

Winner will have £50 sent via Bank Transfer within 24 hours of the race ending

10 THINGS TO KNOW ABOUT DIGITAL FOOTPRINTS

1 When you search and interact online, a **trail of info** is left behind.

2 Elements of your digital footprints can be **searched or shared**.

3 Digital footprints can be **helpful or harmful** to your reputation both now and in the future.

4 Once online, things can exist **forever** (even if deleted).

5 Always **think** before you post online.

6 Personal information or opinions sent to one person can be **shared** with a larger audience.

7 **Googling yourself** can be a worthwhile exercise.

8 Old or inactive accounts should be **disabled or deleted**.

9 Keep personal details private and control the **privacy settings** on your accounts.

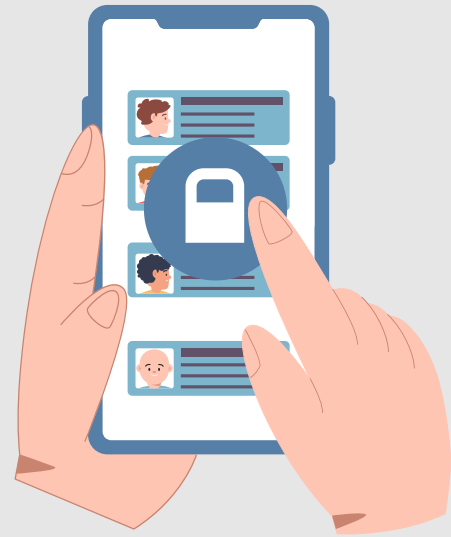
10 Be mindful of the digital footprints of **others** (e.g. Ask before tagging photos).

STAYING SAFE ONLINE: A SHARED RESPONSIBILITY

Many children received devices as gifts this Christmas, connecting them to the online world. We encourage parents and carers to ensure these devices are set up with age-appropriate safety measures and to talk to children about staying safe online.

For tips and resources, visit the NSPCC website: [NSPCC Online Safety](#).

Together, we can help children enjoy technology safely.



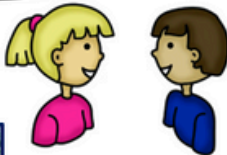
We encourage parents and carers to talk to their children about online safety.

STAYING SAFE

at **Hollingwood Primary School**

Are you feeling worried about yourself or someone else?

Do you want to talk to someone who can help?



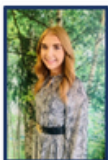
Mr Stewart
Senior Designated Safeguarding Lead



Miss Clarke
Deputy Designated Safeguarding Lead



Miss Thirkell
DSL



Miss Robinson
DSL



Miss Hudson
DSL



Mrs Vodden-Page
Safeguarding Governor

SAFEGUARDING - OUR NO.1 PRIORITY

Safeguarding our pupils is paramount at Hollingwood Primary School.

You must act if you have any concerns about the safety or wellbeing of a child.

Please contact a DSL (Designated Safeguard Lead) to share your concerns.

The most time efficient way to contact a DSL is by calling the school office.

Or, alternatively you can email via - safeguardingreports@hollingwood.derbyshire.sch.uk